

YEAR

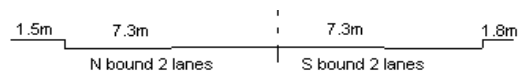
2013

LINK

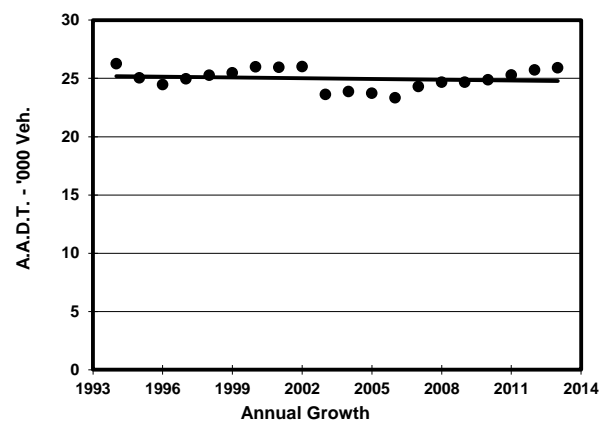
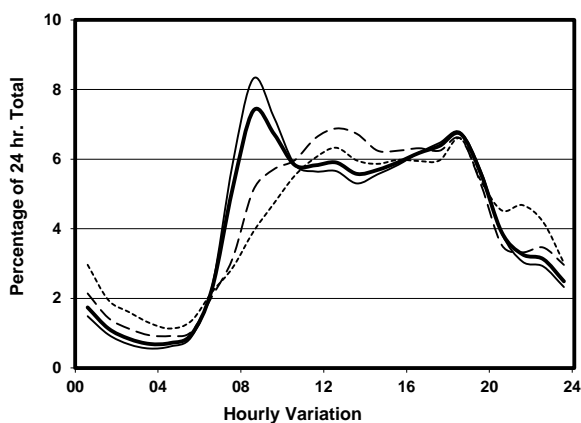
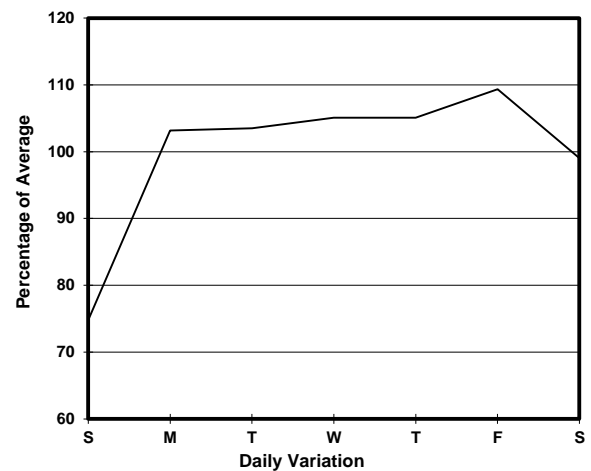
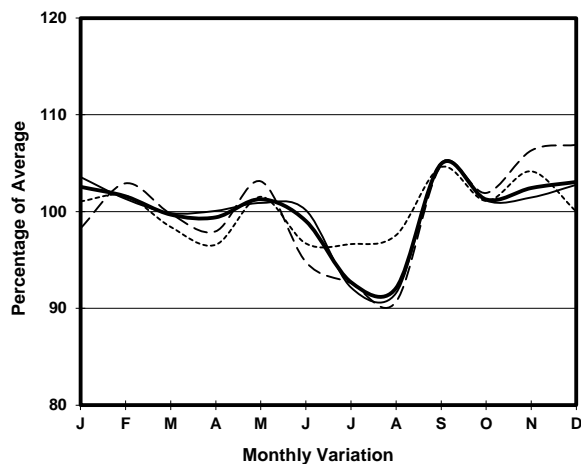
POK FU LAM RD (from SASSOON RD to CHI FU RD)

CORE STATION  
ROAD NETWORK  
ROAD TYPE

1005  
MAJOR  
PRIMARY DISTRIBUTOR



### 1. TRAFFIC FLOW VARIATION AND GROWTH



### 2. TRAFFIC CHARACTERISTICS (BY DIRECTION)

| Parameter                            | All - Day | Mon. - Fri. | Sat.      | Sun.      |
|--------------------------------------|-----------|-------------|-----------|-----------|
| <b>SOUTH BOUND</b>                   |           |             |           |           |
| A.A.D.T.                             | 12860     | 13690       | 12870     | 9990      |
| R 12 / 24 - %                        | 71.6      | 72.8        | 70.5      | 65        |
| R 16 / 24 - %                        | 88.8      | 89.8        | 86.9      | 84.2      |
| AM Peak Hour                         | 0900-1000 | 0900-1000   | 0900-1000 | 0900-1000 |
| One-way flow at AM peak hour         | 840       | 960         | 740       | 460       |
| T - % (AM)                           | -         | -           | -         | -         |
| PM Peak Hour                         | 1600-1700 | 1800-1900   | 1600-1700 | 1600-1700 |
| One-way flow at PM peak hour         | 810       | 870         | 840       | 620       |
| T - % (PM)                           | -         | -           | -         | -         |
| Prop.of commercial vehicles - 16 hr. | -         | -           | -         | -         |
| <b>NORTH BOUND</b>                   |           |             |           |           |
| A.A.D.T.                             | 13050     | 13960       | 13140     | 9660      |
| R 12 / 24 - %                        | 75        | 76.5        | 73.1      | 66.6      |
| R 16 / 24 - %                        | 89.6      | 90.5        | 87.9      | 84.8      |
| AM Peak Hour                         | 0800-0900 | 0800-0900   | 0900-1000 | 0900-1000 |
| One-way flow at AM peak hour         | 1120      | 1370        | 740       | 470       |
| T - % (AM)                           | -         | -           | -         | -         |
| PM Peak Hour                         | 1800-1900 | 1800-1900   | 1800-1900 | 1800-1900 |
| One-way flow at PM peak hour         | 940       | 1000        | 950       | 710       |
| T - % (PM)                           | -         | -           | -         | -         |
| Prop.of commercial vehicles - 16 hr. | -         | -           | -         | -         |

### 3. OTHER INFORMATION AND COMMENT